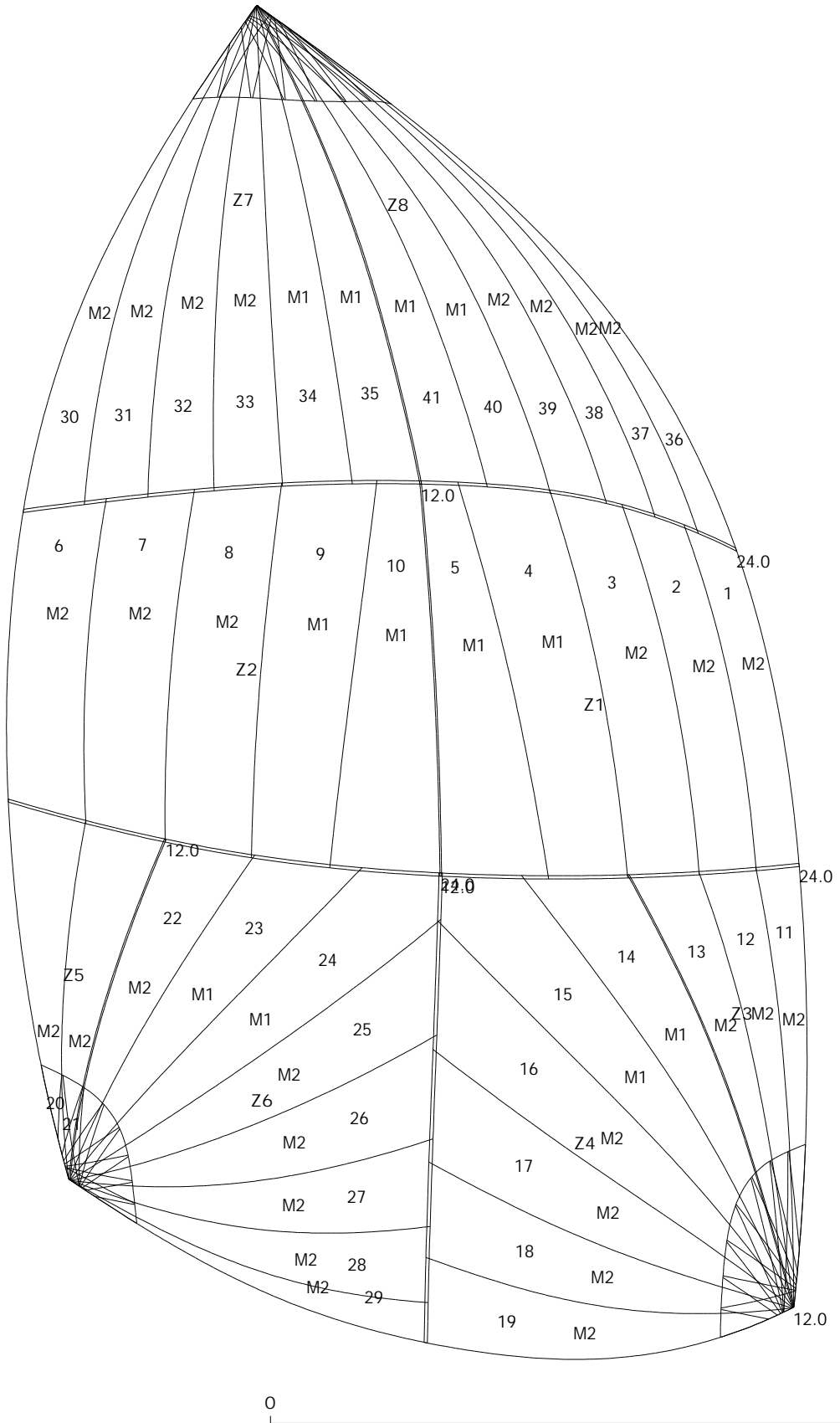
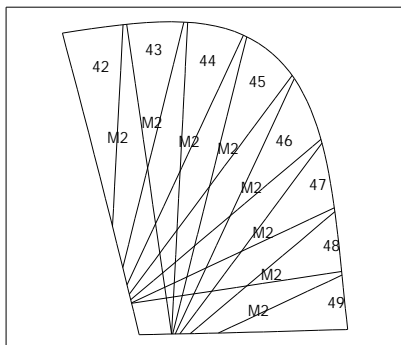


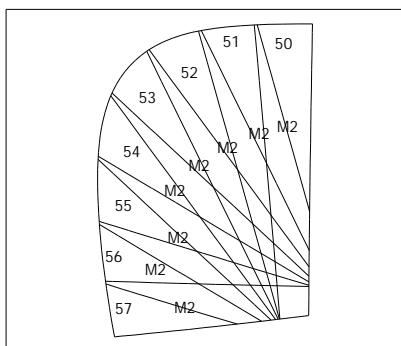
Panel layout



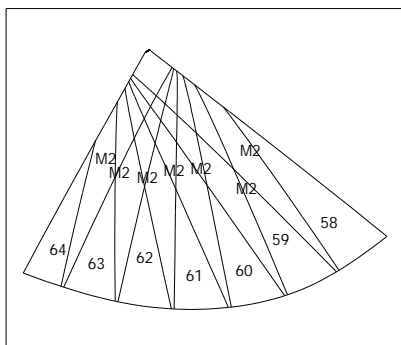
Patch layout



P9



P10



P11



Date: 10/17/2016
 Designer:
 Company:
 Filename: S16660C.pak

Sail: ASY
 Boat: BULL 7000
 Customer: SOROMAP / NEPUNE
 Order Ref.:

Measurement Check List

Measurement rules Ref.: SPI IRC&CLASSIC

Area = 56.908 m² [SHW] = 6.198 m [SF] = 6.300 m [Luff] = 11.080 m [Leech] = 10.000 m SPA = 54.40 SHW coef = 98.39 % [FRONT] = 11.123 m [1/4 guirth] = 6.903 m [3/4 guirth] = 3.588 m SSA = 54.66

Angles (Flat on the floor) Clew: 102.55 ° Tack: 97.25 ° Head: 88.01 °

Roach (After broadseaming)

	1/8	2/8	3/8	4/8	5/8	6/8	7/8
Luff	-33.1 mm	-35.8 mm	-25.3 mm	-3.0 mm	21.5 mm	27.3 mm	17.3 mm
Leech	-84.1 mm	-138.7 mm	-171.8 mm	-175.6 mm	-163.7 mm	-146.2 mm	-88.0 mm

Reef, Battens, Shape stripes

Area & Weight

Sail area (mould): 56.91 m² Material area: 64.10 m² Material weight: ???

Materials

Material's ID	Material's ref. (&color)	Area (m ²)	Weight (g)	Panels
M1	KIT NYLON 0.75 (WHITE)	19.227		4-5 9-10 14-15 23-24 34-35 40-41
M2	KIT NYLON 0.75 (BLUE)	44.870		1-3 6-8 11-13 16-22 25-33..
				..36-39 42-64

Seam width

Seam width (mm)	Zones; Total length (m)
24.0	Zone-seams: 1...2; 4; TOTAL: 16.7m
12.0	Zones: Z1...Z8; Zone-seams: 3; 5...7; TOTAL: 140.9m

Sail outline finishings

Hemmings: None

Outline drawings: None

Notes